

# PRODUCT CATALOGUE



**MEDICALSA**

SYSTEMS & TRAINING

Agenzia esclusiva Campania Basilicata Molise

MedicalSA S.r.l.  
Via Roberto Wenner, 57  
84131 Salerno - Italy  
Tel./fax 089.9849805  
info@medicalsai.it  
[www.medicalsai.it](http://www.medicalsai.it)



**HTSMED**

Healthcare Technology Solutions

Sede operativa Italia

HTSMED  
Via Napoli, 350  
80053 Castellammare di Stabia (NA)  
Tel: (+39) 081.19484552  
info@htsmed.com  
[www.htsmed.com](http://www.htsmed.com)



**MEDICALSA**  
SYSTEMS & TRAINING

Partner commerciale Esclusivo Campania-Basilicata-Molise



**HTSMED**  
Healthcare Technology Solutions



**ANKE**



## Company Milestones

- 1989** First MRI in China
- 1991** First High-tech Enterprise in Shenzhen, Guangdong
- 1991** First High-tech Enterprise in Chinese Medical Device Industry
- 1992** China's First Superconductive MRI 0.6T
- 1992** China's First High-precision Stereo-tactic
- 1994** Top One Hundred National High-tech Enterprise
- 1995** First PACS in China
- 1998** First Open MRI with Permanent Magnet in China
- 2000** First Neurosurgical Navigation System in China
- 2002** China's First Mammography System ASR-3000
- 2004** Guangdong Top One Hundred High-tech Enterprise
- 2009** First Mobile CT in China
- 2010** China's First Superconductive MRI 1.5T
- 2012** Launched FPD Digital Mammography
- 2013** The World First Non-contact Slip-ring 16-slice Spiral CT
- 2014** Third Generation 1.5T Superconducting MRI
- 2015** Third China's First High-end Dental CT
- 2016** Launched Precision Platform CT Systems
- 2017** Launched Non-contact Slip-ring 128-slice Spiral CT
- 2018** China First Vehicle-mounted Whole Body CT



## Chinese Medical Trailblazer and Pioneer

### Established in 1986

**10000+** user/hospitals globally

Over **1600+** MRI & **1200+** CT installations

Export to **50+ countries.**

Footprints reached Indonesia, Vietnam, Russia, Kazakhstan, Uzbekistan, Italy, Mexico, Peru, Nigeria, India, Cote d'Ivoire, Cameroon, Colombia, Zambia, Kenya, UAE, Turkey, Yemen, Bangladesh, South Sudan.....

#### All around service support:

- **24-hours** online support.
- **Local** warehouse & service team.
- **200+** service engineers globally.



### SuperMark 1.5T

The 4<sup>th</sup> Generation of Superconductive MRI System

- 60cm Short bore superconducting magnet
- Liquid helium "Zero" boil-off technology
- Soft-sound technology with lower noise
- High efficiency RF system
- Excellent gradient system

### OPENMARK 5000

New Generation Mid-field MRI System Industrial Leading Technology

- Integrated structure of RF & Gradient coil
- Industry's highest field intensity of permanent MRI
- Intelligent APEX operating system





### **OPENMARK 4000**

Compact Structure Wide Application

- Open C-shaped design
- Advanced gradient and RF system
- Intelligent APEX Operating System

### **OPENMARK III**

Compact Structure Wide Application

- Open C-shaped design
- Advanced gradient and RF system
- Intelligent APEX Operating System



## ANATOM 128

Your Future Choice

- Non-contact and non-abrasion slip ring design
- High efficiency OptiWave™ detector
- Admir™ iterative reconstruction technology
- Adose™ dose management platform
- Easy and convenient low dose cardiac imaging
- Ultra-low dose lung screening



## ANATOM 64 Clarity / ANATOM 64 Precision

Precision Technology Platform

- High efficiency OptiWave™ detector
- Optimized high contrast and low-contrast resolutions
- Admir™ iterative reconstruction technology
- AccuDose-comprehensive low dose imaging
- Professional and convenient to obtain cardiac image
- AccuTilt dual-mode gantry tilt technology



## ANATOM 16 HD

Precision Technology Platform

- High efficiency OptiWave™ detector
- AccuOrgan-targeted organ imaging
- Admir™ iterative reconstruction technology
- AccuDose-comprehensive low dose imaging
- Ahead-Head dual-energy head imaging technology
- AccuTilt dual-mode gantry tilt technology



## ANATOM 32 Fit / ANATOM 64 Fit

Fit Your Costs

- High efficiency OptiWave™ detector
- Admir™ iterative reconstruction technology
- Adose™ dose management platform fits your dose
- Comprehensive routine clinical applications
- DigiTilt gantry tilt technology fits your efficiency
- Versatility fits costs for running your successful business



## CT Series

### DENTOM CT

World Class Dental Cone Beam CT System

- Large size amorphous silicon flat panel detector
- Super large field high resolution 3D imaging
- MetalCARE metal artifact correction technology
- BoneCARE Correction techniques for bony artifact
- NoiseCARE noise reduction correction technology
- Equipped with a powerful postprocessing software



## X-Ray Series

### ASR-4000 Series

Digital Mammography System

- High-end hardware component
- Multi-configuration available for your options
- L-Dose dose optimization technology
- I-Pose intelligent positioning technology
- F-Comp flexible compression technology
- E-View excellent working platform





## X-Ray Series

### ASR-6850P series

Classic Floor-mounted DR System

- Various configurations available for your needs
- Mobile multi-functional FPD fulfills different clinical scenarios
- Integrated four-way floating patient table
- Intelligent LCD touch screen for byside parameter settings
- Whole spine scan applicable as an option for special need
- Professional and abundant protocols for different cases



### ASA-200E

Single-syringe System

- New control platform, stable performance & friendly interface
- 100 sets of storable injection programs
- The double-operation working platform makes the scanning room and the operation room integrated
- "Air-exhausted confirmation" button to ensure safe injection



## High Pressure Injection Systems

### ASA-300

Dual-syringe System

- Large touch screen for easy and convenient usage
- A variety of input and output methods compatible to link with a variety of imaging equipment
- Automatic sound and light alarms indicate the pressure limit while stopping the injection
- The real-time indicator flashes to remind the injection process.



### ANATOM Vet

32 slice CT System Taking Care of Your Pets

- Compact design to fit your cost and space
- Dedicated vet protocols support all clinical needs with high image quality
- Large space makes more comfortable exam and easier operation

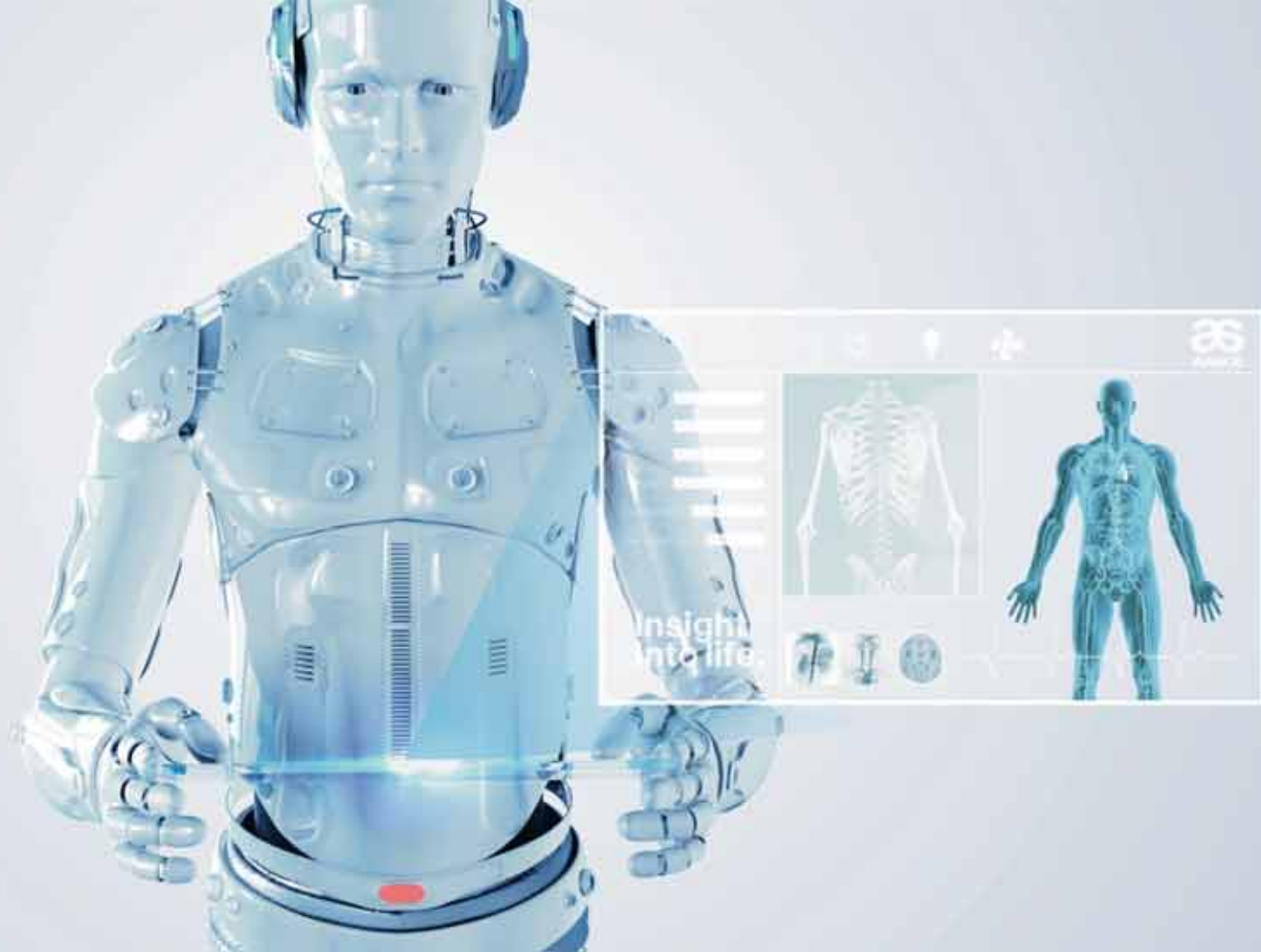


### OPENMARK Vet

C-shape permanent MRI System Taking Care of Your Pets

- Integrated electric patient table to provide more convenient operation
- Dedicated vet protocols support all clinical needs with high image quality
- Large openness makes more comfortable exam and easier operation





## **EXTREME IMAGE SMART MEDICAL**

Artificial Intelligence based technology assists medical imaging diagnosis.

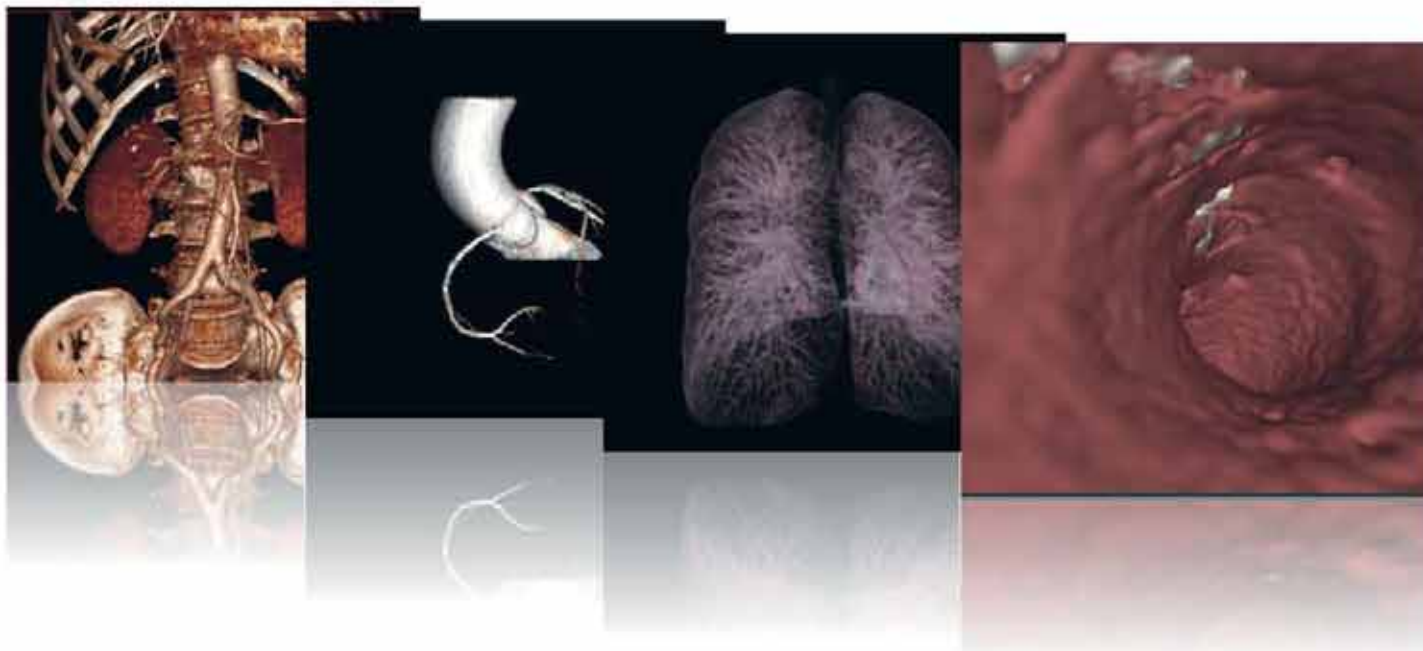
- Auto Segmentation
- Auto Location
- Auto measurement of lesion

## ANKE Workstation

AI based advanced workstation

### Auto segmentation

Automatic segmentation of bone, lung, coronary artery and other blood vessel.



### Auto location and measurement of disease

#### **Pneumonia analysis**

Automatic location and measurement pneumonia. Comparison of old and new data can monitor patient prognosis.

#### **Nodule analysis**

Automatic location and measurement lung nodule. Comparison of old and new data can follow up lesions progression.

#### **Emphysema analysis**

Automatic measurement lung emphysema to evaluation respiratory function.

#### **Coronary analysis**

Automatic segmentation and extraction centerline of the different branch of coronary artery, calculation of vessel stenosis, measurement atherosclerotic plaques and clots composition.

#### **Vascular analysis**

Automatic segmentation and extraction centerline of blood vessel. Calculation of vessel stenosis, measurement atherosclerotic plaques and clots composition.

#### **Brain hemorrhage analysis**

Automatic location and measurement brain hemorrhage.

#### **Dental analysis**

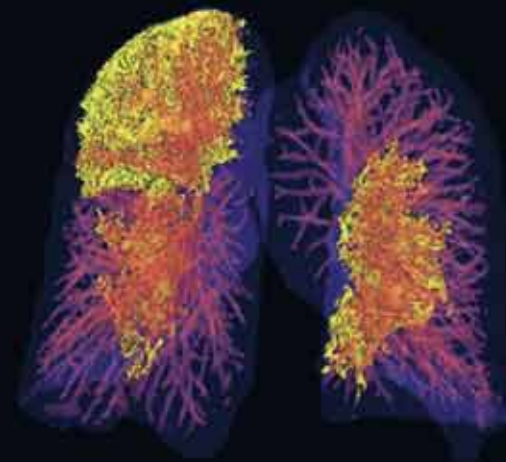
Automatic tooth panorama and each tooth slice, neural tube analysis, TMJ analysis.



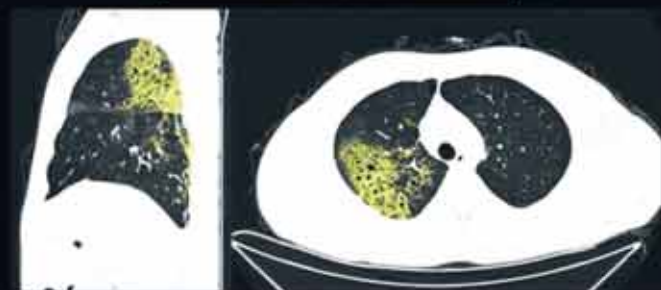
To fight against COVID-19,  
ANKE is on the way.

## ANKE's AI Technology Solutions

A short-time AI imaging analysis technology 30 seconds to automatically determine the location of pneumonia, providing the accurate and effective results for doctors.



Pneumonia AI analysis



## ANKE's Shelter CT & Mobile CT solutions



To facilitate the fast testing and diagnosis in epidemic areas.



## All-around Service Support

7x24 hours uninterrupted after-sales services



Service response within 24 hours;



Rich spare parts backup and fast delivery;



Efficient service network, over 100 service engineers.